

## ETAP FAQ # 3

### MS Access Database Used for Crystal Reports Formats

**Description:** ETAP stores the output report data in Microsoft Access databases so that they may be viewed using the Crystal Reports Formats.

**Version:** ETAP 4.0.4

**Published:** May 6, 2002

Microsoft Access files are generated when you run studies that have Crystal Reports formats. These database files are located in the project directory. When you open any one of the Crystal Reports, the output report data is retrieved from the corresponding database.

If you need to modify or extract data directly from any of the Crystal Reports databases, you may use Microsoft Access to do so. Associating these files with Microsoft Access will facilitate the process of opening the databases. The different modules in ETAP write the output report data to a database with a particular extension.

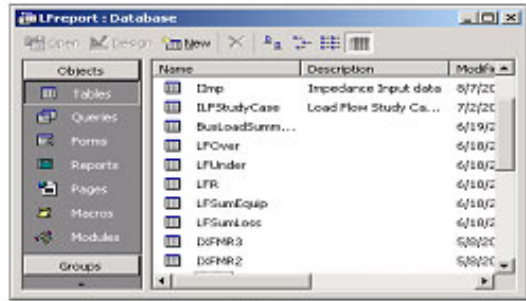
These extensions identify the different report databases.

*.LF1	Load Flow	*.MS1	Motor Starting
*.SA1	Short-Circuit, ANSI, Device Duty	*.HA1	Harmonics
*.SA2	Short-Circuit, ANSI, Unbalanced Faults	*.RA1	Reliability
*.SA3	Short-Circuit, ANSI, 30 Cycle, Balanced	*.DS1	DC Short-Circuit
*.SI1	Short-Circuit, IEC (909), Device Duty	*.DL1	DC Load Flow
*.SI2	Short-Circuit, IEC, Unbalanced Faults	*.DB1	Battery Sizing
*.SI3	Short-Circuit, IEC (363), Transient SC	*.GR1	Ground Grid System

The following diagram indicates the process of reading or writing data from the Crystal Reports databases:



Run a Load Flow to generate an output Access database

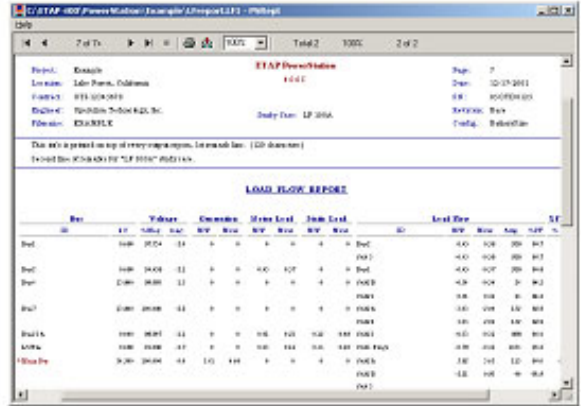


Access Database  
(Contains the Input, Results, & Summary)

The Crystal Report Viewer/Printer gets the results from the Access database.



Report Manager  
(Select a Crystal Report Format)



Crystal Reports Viewer/Printer  
(View, Print, & Export the output report)

