

ETAP FAQ # 19

How To Assign a Retrofit Trip Device

Description: Instructions on how to assign a retrofit trip unit to a low voltage circuit breaker.

Version: 5.0

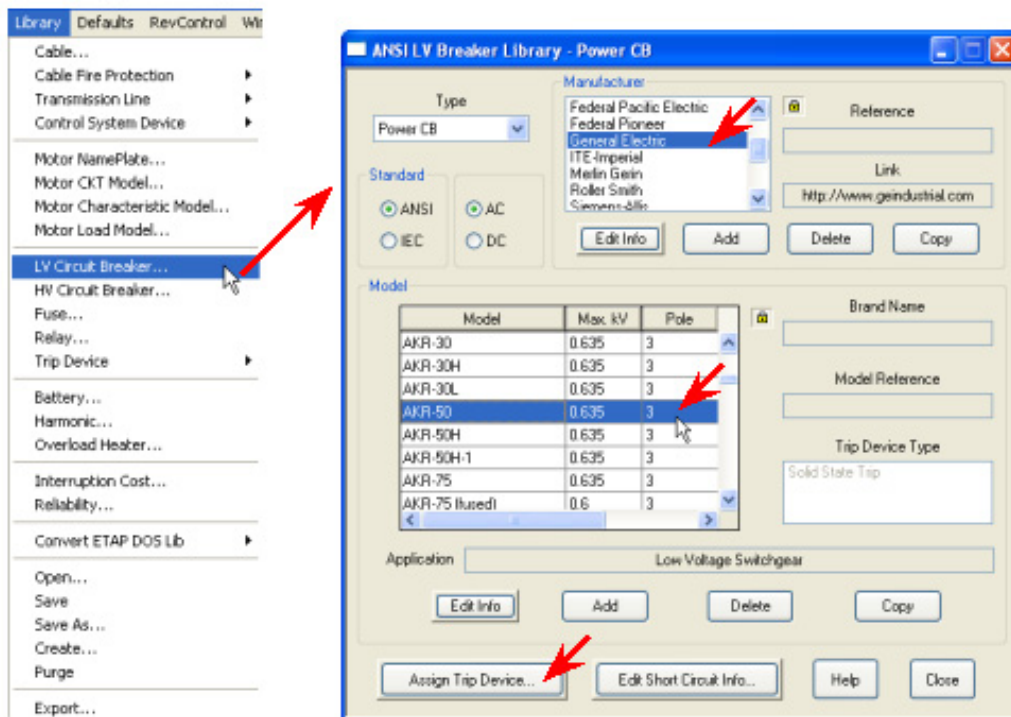
Published: November 10, 2004

Introduction

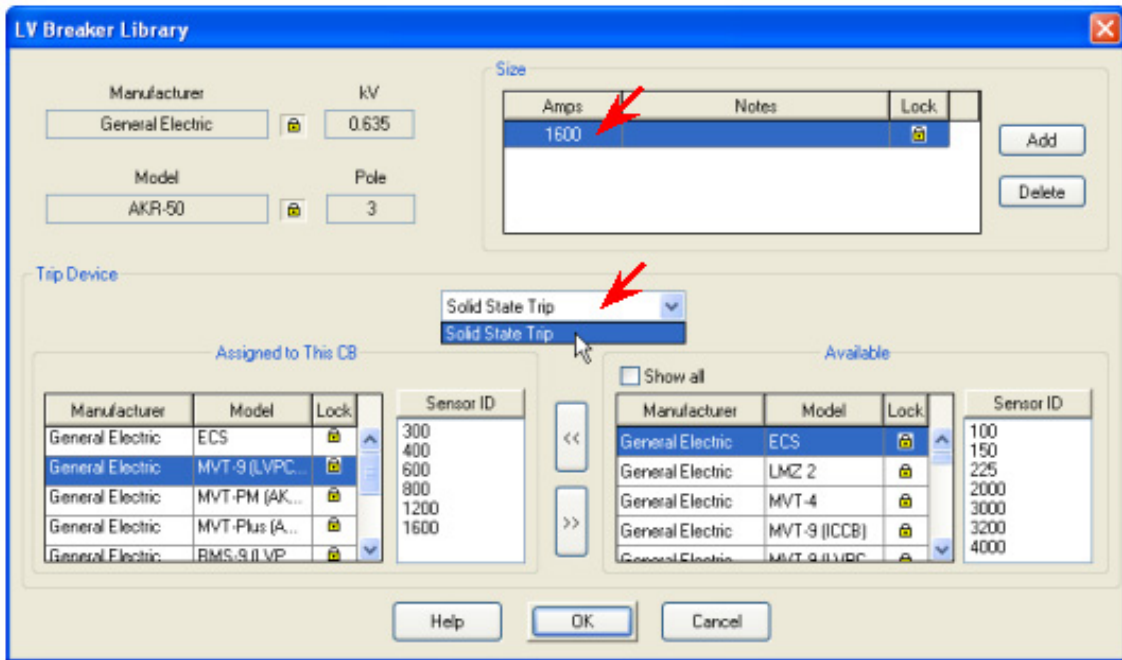
In ETAP 5.0 library, trip units are assigned to low voltage circuit breakers based on the published manufacturer data. Trip units with retrofit kits may be used with a variety of breakers, thereby creating a unique breaker-trip unit combination. The exercise below shows how to assign a trip unit to a low voltage circuit breaker for such unique cases.

Example: Assign Carrier FB600E Retrofit Unit to GE AKR-50 Breaker

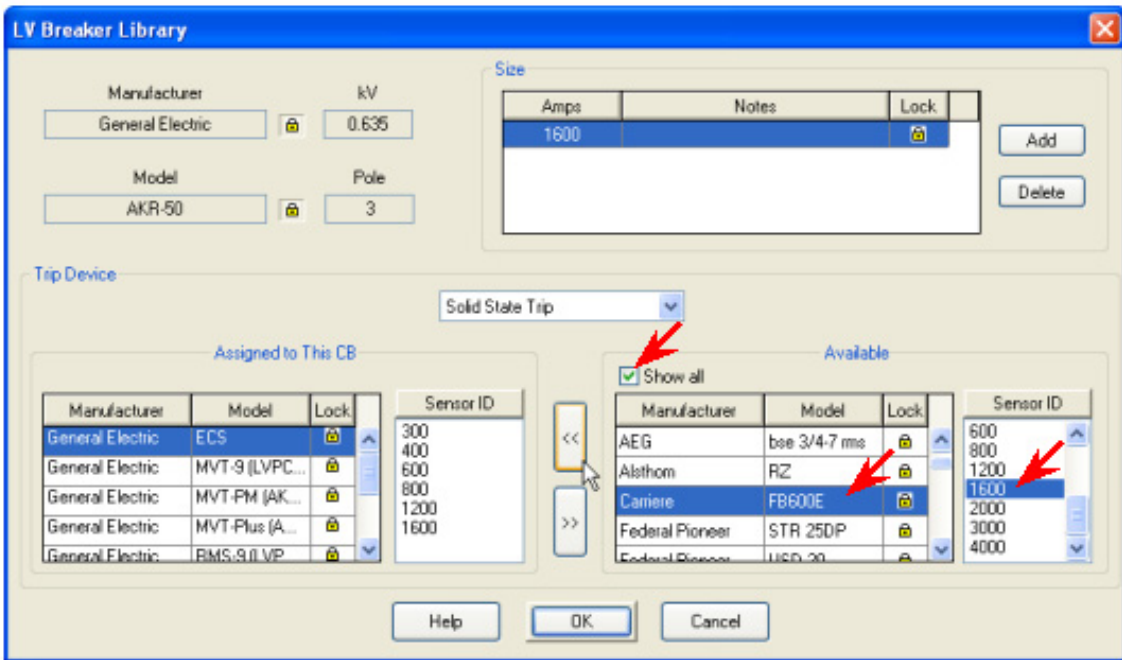
1. Open your ETAP project.
2. Open the LV Circuit Breaker library editor from the Library menu on the menu bar.



3. Select the desired breaker Type (Molded Case / Power CB / Insulated Case), Standard (ANSI / IEC) and System (AC / DC).
4. Now select the breaker manufacturer and model entry (Model – Max Voltage – Pole).
5. Click on the 'Assign Trip Device...' button. This will open the editor for entering the breaker sizes and assigning trip units.

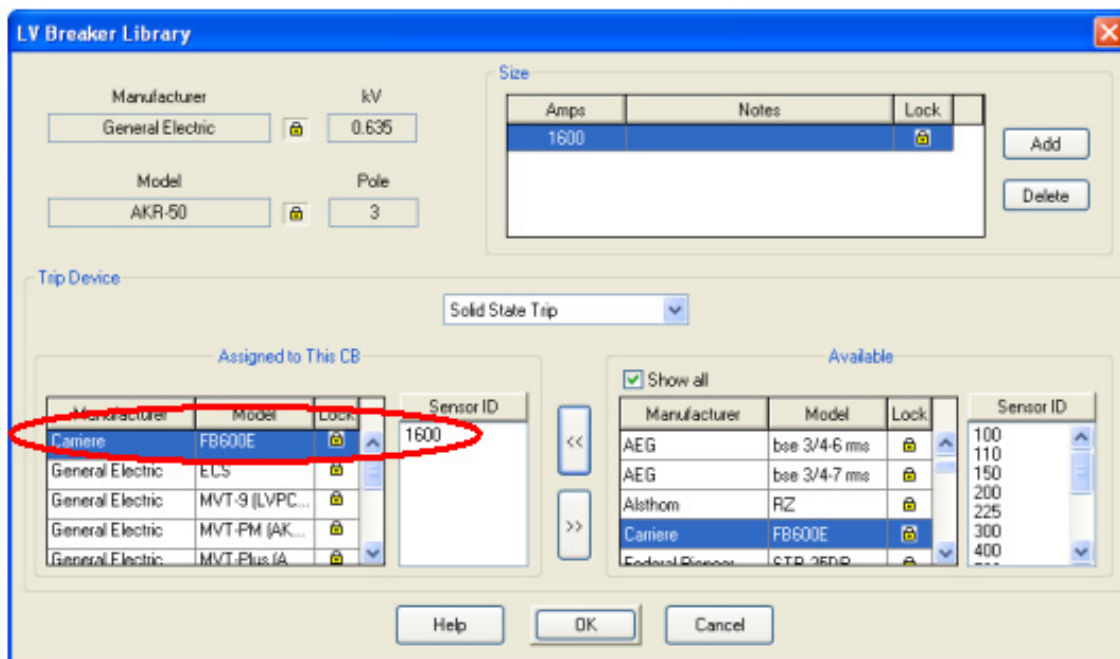


6. Select the breaker size (by highlighting it) for which the trip unit is to be assigned.
7. For a highlighted size, select the applicable trip device type (Thermal Magnetic, Solid state, Motor Circuit Protector, Electro-Mechanical) to be assigned.
8. Once the trip device type is selected, the 'Available' section will display all the applicable trip units, based on a search for identical breaker and trip device manufacturer and/or model.
9. Check 'Show all' to display all manufacturers and models for the selected trip device type.



10. Select the desired trip device manufacturer and model. For the selected trip manufacturer and model, select the Trip ID (Sensor ID for Solid State Trip device) by clicking and highlighting it. Note that multiple trip device sizes can be selected for assignment.

11. To assign the trip device to the selected breaker size, click on the 'Assign' button (<<). Once assigned, the trip unit Manufacturer – Model – ID will be displayed on the 'Assigned to this CB' section.



12. Click OK to close the editor.

13. To save the trip unit assignment, close the LV Circuit Breaker library editor(s) by pressing OK and click on Save from the Library menu.