

ETAP FAQ # 27

How do you export protective device settings to Excel?

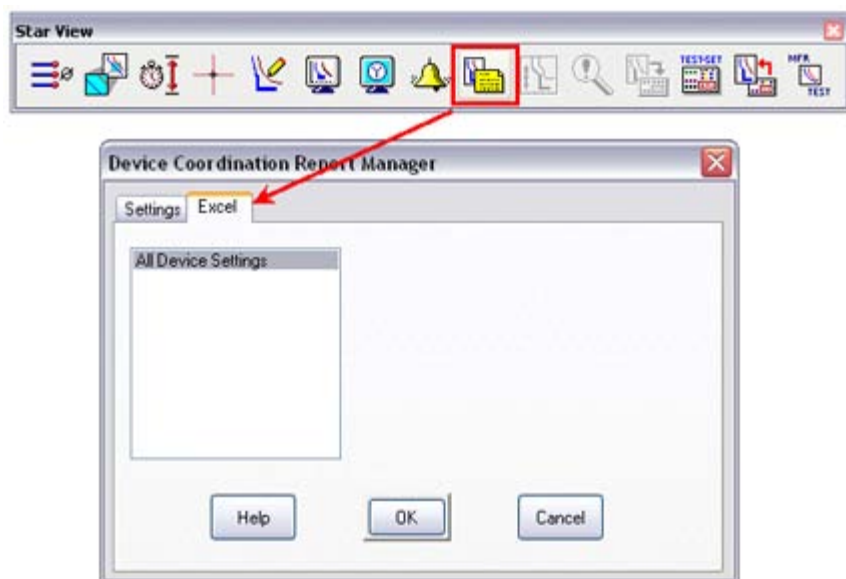
Description: Preview and print the protective device settings data using Crystal Reports format or Microsoft Excel.

Version: ETAP 7.0

Published: July 30, 2009

To generate the excel report of the device settings:

1. Create the Star TCC view of the device.
2. Click the Device Settings Reports button.
3. From Device Coordination Report Manager, select Excel tab and select all device settings.



Each protective device type is separated by tabs on the bottom of the excel sheet. Select the device type and view the settings for each device in the coordination study.

	Tap (Pickup)			Time Dial / Mult.		Instantaneous		
	Range	Setting	Primary	Range	Setting	Range	Settings	Primary
4	1.5 - 13.125 Sec - 5A	4.500	360.000	0.5-10	10.000	1 - 31 x51 Pickup	18.000	6480.00
5	0.1 - 0.875 Sec - 5A	0.500	40.000	0.5-10	1.500	1 - 31 x51 Pickup	4.000	160.00
6	1.5 - 13.125 Sec - 5A	3.000	240.000	0.5-10	3.000	1 - 31 x51 Pickup	13.000	3120.00
7	0.1 - 0.875 Sec - 5A	0.500	40.000	0.5-10	1.500	1 - 31 x51 Pickup	4.000	160.00
8	1.5 - 13.125 Sec - 5A	3.375	270.000	0.5-10	6.000	1 - 31 x51 Pickup	8.000	2160.00
9	0.1 - 0.875 Sec - 5A	0.500	40.000	0.5-10	1.500	1 - 31 x51 Pickup	4.000	160.00
10	1.5 - 13.125 Sec - 5A	3.375	270.000	0.5-10	6.000	1 - 31 x51 Pickup	12.000	3240.00
11	0.1 - 0.875 Sec - 5A	0.375	30.000	0.5-10	1.500			
12	1.5 - 13.125 Sec - 5A	3.375	270.000	0.5-10	10.000	1 - 31 x51 Pickup	16.000	4320.00
13	0.1 - 0.875 Sec - 5A	0.500	40.000	0.5-10	1.500	1 - 31 x51 Pickup	4.000	160.00
14	0.5 - 4.375 Sec - 5A	3.000	240.000	0.5-10	2.000	1 - 31 x51 Pickup	8.000	1920.00
15	0.1 - 0.875 Sec - 5A	0.500	40.000	0.5-10	1.500	1 - 31 x51 Pickup	4.000	160.00
16	1.5 - 13.125 Sec - 5A	5.625	1350.000	0.5-10	3.000			
17	0.1 - 0.875 Sec - 5A	0.100	24.000	0.5-10	4.000			
18	0.5 - 9.99 Sec - 5A	3.200	256.000	0-9.9	1.200	10 - 99.9 Sec - 5A	31.300	2504.00
19	0.1 - 3.2 Sec - 1A	0.500	40.000	0-9.9	1.700			
20	0.5 - 9.99 Sec - 5A	4.400	352.000	0-9.9	9.900	10 - 99.9 Sec - 5A	50.000	4000.00
21	0.1 - 3.2 Sec - 1A	0.600	48.000	0-9.9	1.100			
22	1.5 - 13.125 Sec - 5A	3.375	270.000	0.5-10	6.000	1 - 31 x51 Pickup	16.000	4320.00
23	0.1 - 0.875 Sec - 5A	0.500	40.000	0.5-10	1.500			
24	0.3 - 2.625 Sec - 1A	0.600	60.000	0.05-1	0.200	1 - 31 x51 Pickup	27.000	1620.00

	G	H	I	J	K	L	M	N
1				Thermal		Magnetic (Inst.)		3-Phase kA
2	Size	Amps	SC Rating	Setting	Trip (Amps)	Setting	Trip (Amps)	
3	400	400	85 kA @ 0.48 kV	Fixed		6.25X	2500.000	51.301 Sym. (Calc.)
4	1200	1200	50 kA @ 0.48 kV	Fixed		5.176X	6211.200	0 Sym. (Calc.)
5								

	C	D	E	F	G	H
2						
3	Manufacturer	Model	Max Voltage	Size/Frame	Amps	SC Rating
4	General Electric	WPS-40	0.48 kV	4000	4000	85 kA @ 0.48 kV
5	General Electric	WPS-40	0.48 kV	4000	4000	85 kA @ 0.48 kV
6	General Electric	SS 2000	0.48 kV	2000	2000	65 kA @ 0.48 kV
7	General Electric	SS 2000	0.48 kV	2000	2000	65 kA @ 0.48 kV
8	General Electric	SS 1600	0.48 kV	1600	1600	65 kA @ 0.48 kV
9	General Electric	SS 1600	0.48 kV	1600	1600	65 kA @ 0.48 kV
10	General Electric	SS 800	0.48 kV	800	800	65 kA @ 0.48 kV
11	General Electric	SS 800	0.48 kV	800	800	65 kA @ 0.48 kV
12	General Electric	WPS-20	0.48 kV	2000	2000	65 kA @ 0.48 kV
13	General Electric	WPS-20	0.48 kV	2000	2000	65 kA @ 0.48 kV
14						

	S	T	U	V	W	X	Y	Z	AA	AB
2						Short-Time / Ground				
3	Band Label	Band	Pickup Label	Pickup Setting	Trip (Amps)	Curve Label	Curve	Band Label	Band	I't
4	LT Band	7								
5			Ground Pickup	0.55	440			Ground Band	0.5	OUT
6	LT Band	7								
7			Ground Pickup	0.45	360			Ground Band	0.5	OUT
8	LT Band	4.5								
9			Ground Pickup	0.75	1200			Ground Band	0.1	IN
10	LT Band	7								
11			Ground Pickup	0.55	440			Ground Band	0.5	OUT
12	LT Band	11	ST Pickup	2.5	1500			ST Band	0.2	IN
13			Ground Pickup	0.2	160			Ground Band	0.1	
14										

Operation Technology, Inc.

