

## ETAP FAQ # 10

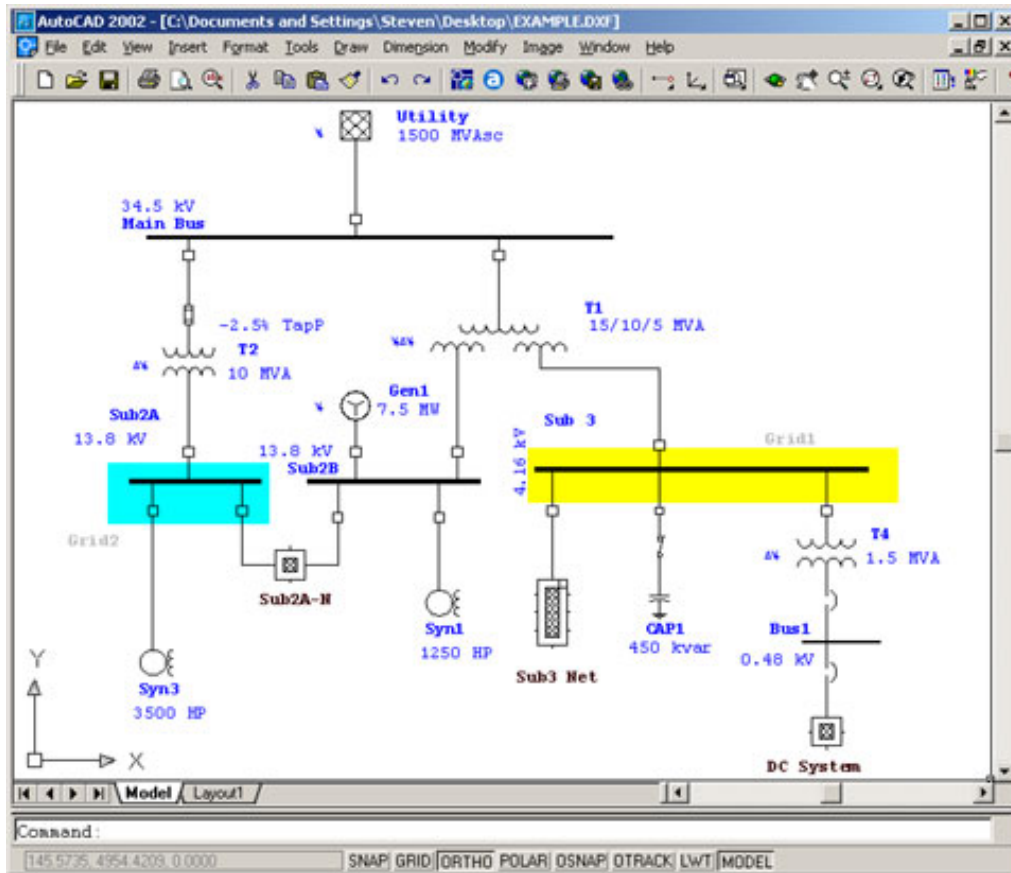
### Exporting a One-Line Diagram to DXF Format

**Description:** How to convert an ETAP one-line diagram into an AutoCAD DXF file.

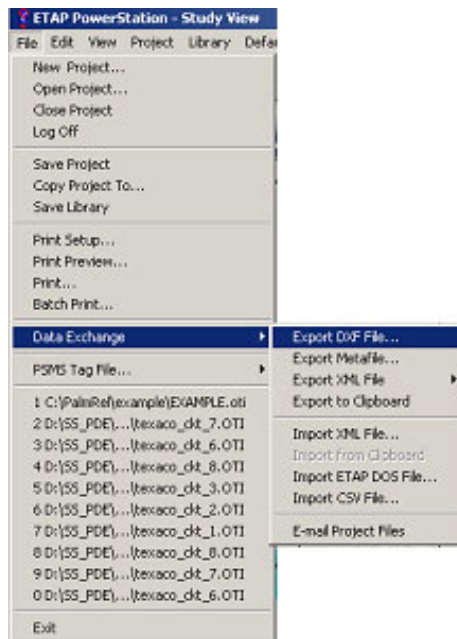
**Version:** ETAP 4.7

**Published:** November 12, 2002

**Objective:** An ETAP one-line diagram may be converted into an AutoCAD DXF format drawing. This is accomplished by the command "Export DXF File..." available in the File \ Data Exchange\ Export DXF menu in ETAP. When this function is invoked, ETAP will create a one-line diagram file in AutoCAD® (Release 2000) DXF format. The DXF file is compatible with AutoCAD® or any other software supporting DXF format file.



**Solution:** Open the project you wish to export. Click on File -> Data Exchange -> Export DXF File... Select a filename and click save.



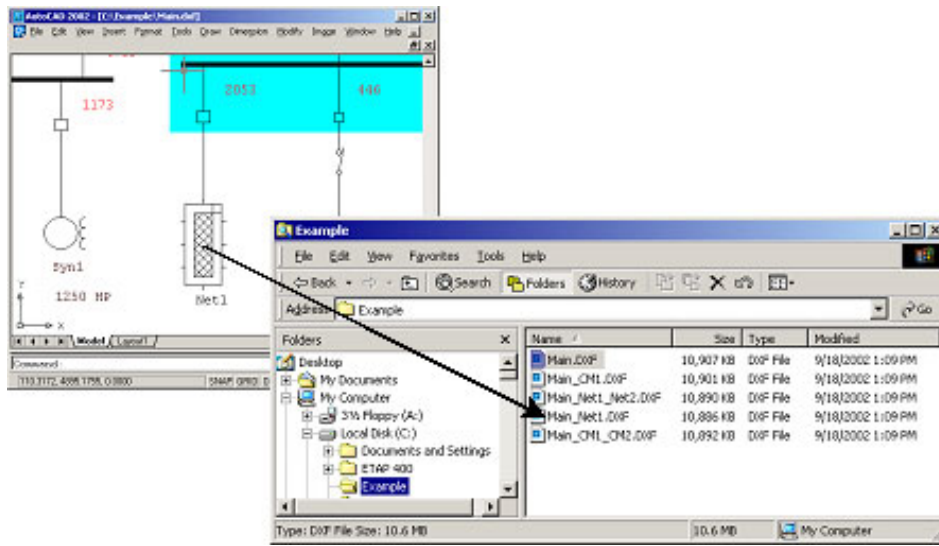
An hourglass symbol will appear in the taskbar during the process of converting ETAP one-line diagram into an AutoCAD DXF file



When the conversion is complete, a message will be displayed indicating that the DXF files were created.



Separate DXF files are created for each composite motor and composite network in the one-line diagram along with a DXF file for the main one-line diagram. Hence a set of DXF files may be created for a ETAP project. It may not be required to know the location of all the DXF files created for a ETAP project as the composite motors and composite networks in the DXF files contain hyperlinks. The composite motor and composite network hyperlinks point to the DXF files representing the one-line diagram within them.



The DXF file created by the "Export DXF File..." command in ETAP represents the active Presentation, Configuration and Revision. For example if a relay is hidden in the active presentation it is not displayed in the DXF file. If the status of a breaker is open in the active configuration, it is shown as open in the exported DXF file. The engineering properties displayed on the ETAP one-line diagram correspond to the active Revision. Similarly the engineering properties displayed on the converted DXF file correspond to the Revision that was active while using the "Export DXF File..." command.

The results of an analysis performed in ETAP may be exported to the DXF File. For exporting the results perform the analysis and display the results on the one-line diagram as required. Use the "Export DXF File..." command while the results are displayed on the one line diagram. The DXF file(s) created will include the results as displayed on the ETAP one-line diagram.

