

ETAP FAQ # 5

Insert Legends, Text, and Tables Into One-Line Diagrams Using OLE and ActiveX Objects

Description: Legends, text, tables, logos, and calendars can be inserted directly into a one-line diagram using OLE and ActiveX objects.

Version: ETAP 4.0.4

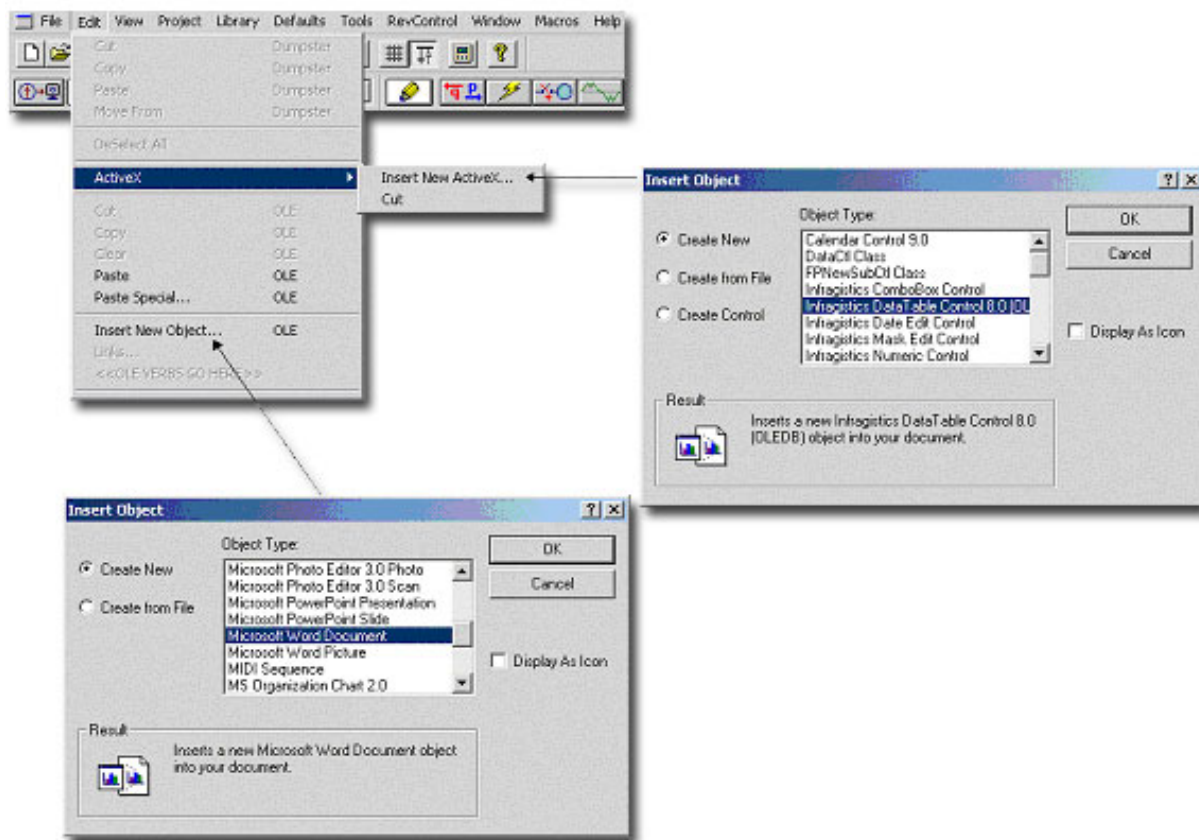
Published: July 12, 2002

Objective:
It is highly desirable to modify your one-line diagram to include a wide variety of objects to customize the user's individual project.

Solution:
ETAP's OLE objects function is a versatile tool for achieving a one-line diagram that meets the user's appearance. You can insert any object registered on your computer as an editable text or an icon. If you decide to insert the icon instead of editable text to minimize the confusion while working on your one-line diagram, it is possible to do so by clicking the right mouse key over the OLE object.

ETAP's ActiveX object is a useful tool for assisting in the accuracy of your ETAP one-line diagram. Inserting a calendar as an ActiveX object can make sure the ETAP one-line diagram date is equivalent to the date of your approved full size diagrams.

Below is the illustrated path you can follow for inserting an OLE or ActiveX object.



The OLE object can be dynamically linked to the ETAP database. The OLE object will continually be updated if there are changes to the one-line diagram. To edit the object, double-click on the object and it will bring you to the program the object is from. Below is a list of some of the most common programs you can use for OLE objects:

1. Legend: Microsoft Word, Microsoft Excel, Microsoft PowerPoint
2. Tables: Microsoft Excel, Microsoft PowerPoint
3. Text: Microsoft Word, WordPad, Notepad

The following one-line diagram includes a variety of different OLE objects.

Logo using Bitmap Images

Cable Schedule using Microsoft Excel document

CableID	Size	Length	#/ph	R	X
Cable1	440	0.000 ft	1	0.10436	0.04660
Cable10	240	567.00 ft	1	0.10300	0.04320
Cable11	440	253.00 ft	1	0.06400	0.03610
Cable12	1	53.000 ft	1	0.16000	0.05700
Cable13	350	67.000 ft	1	0.03500	0.05000
Cable14	250	100.00 ft	2	0.05520	0.03750

Legend Microsoft Word document

Item	POP	SAID	TELE
Item1.ECH1000000	1501	SAID	TELE
Item2.ECH1000000	1501	SAID	TELE
Item3.ECH1000000	1501	SAID	TELE
Item4.ECH1000000	1501	TELE	TELE
Item5.ECH1000000	1501	TELE	TELE

One-Line Diagram
Substation 25
Unit 1&2
Operation Technology, Inc.
Lake Forest, CA
E001-SUB25-0000315

The following one-line diagram includes an ActiveX object.

ActiveX object using Calendar Control

Utility 1500 MVAsc

34.5 kV Main Bus

T2 -2.5% TapP 10 MVA

Gen1 7.5 MW

T1 15/10/5 MVA

Sub 3

Grid2

T4 1.5 MVA

July 2002

Sun	Mon	Tue	Wed	Thu	Fri	Sat
30	1	2	3	4	5	6
7	8	9	10	11	12	13
14	15	16	17	18	19	20
21	22	23	24	25	26	27
28	29	30	31	1	2	3
4	5	6	7	8	9	10

The commands to manipulate OLE objects and ActiveX objects onto a one-line diagram can be found in Section 5.2.2 of the ETAP 4.0 User Guide.

Operation Technology, Inc.

