

ETAP Installation FAQ # 7

ETAP 5.5.5 License Manager Installation Guide

Description: Installation Guide for ETAP License Manager 5.5.5.
For “ETAP-OTI 1410” keys only.

Version: ETAP 5.5.6

Published: August 2007

Keywords: ETAP License Manager, Installation

1.1 License Manager Installation

ETAP 5.5 or higher will use this method of installation. Earlier versions will use the manual installation method described in the following section. You can also use the manual installation procedure if the ETAP License Manager Installation program does not successfully install the ETAP License Manager.

1.1.1 Automated ETAP License Manager Installation

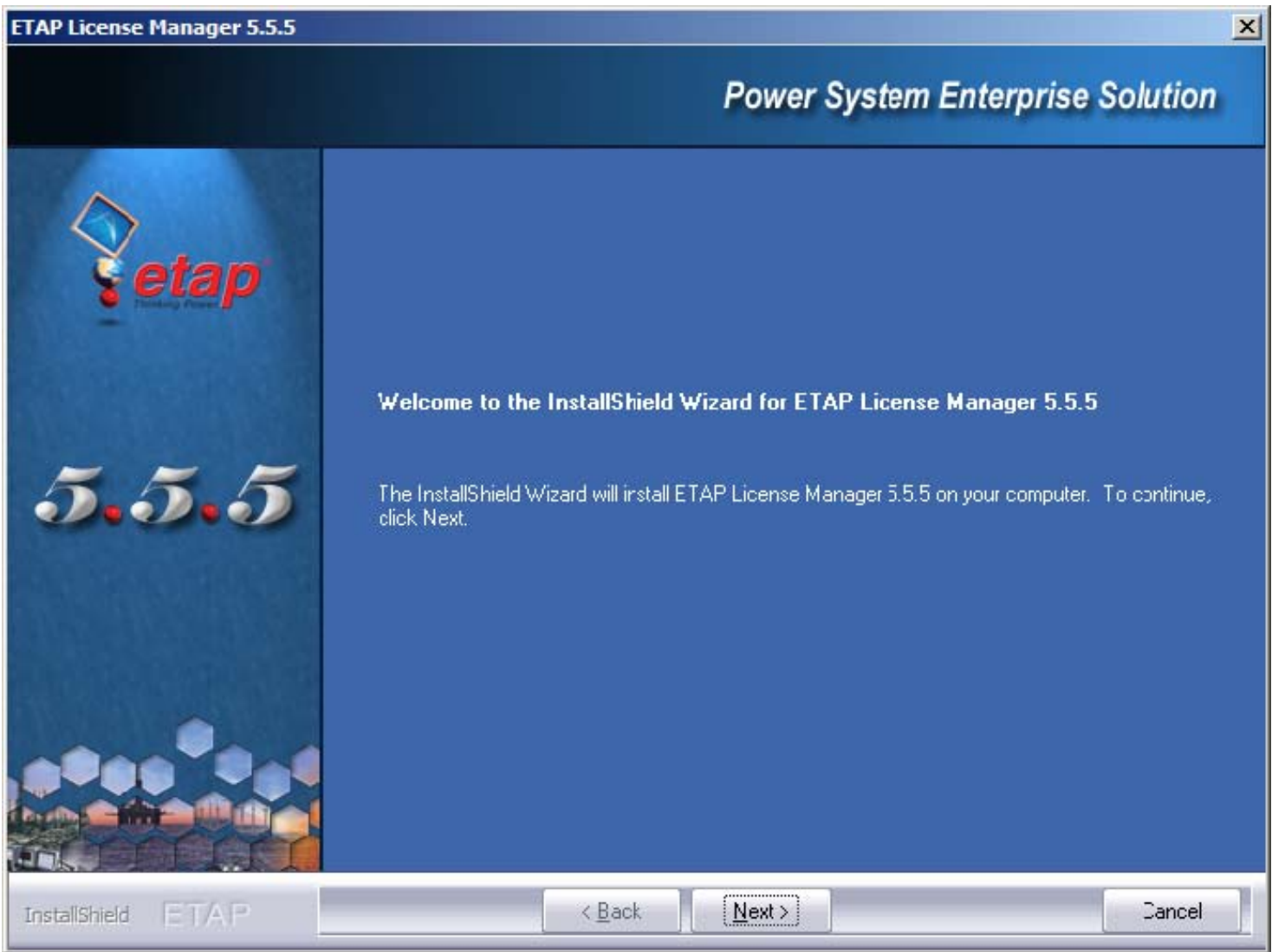
On the ETAP CD, a separate setup program is provided to install the ETAP License Manager. To install the License Manager on a Windows 2000/XP, Server 2003 workstation or server, do the following:

1. Insert the ETAP CD into the CD-ROM drive. The installer displays ETAP Installer dialog box.

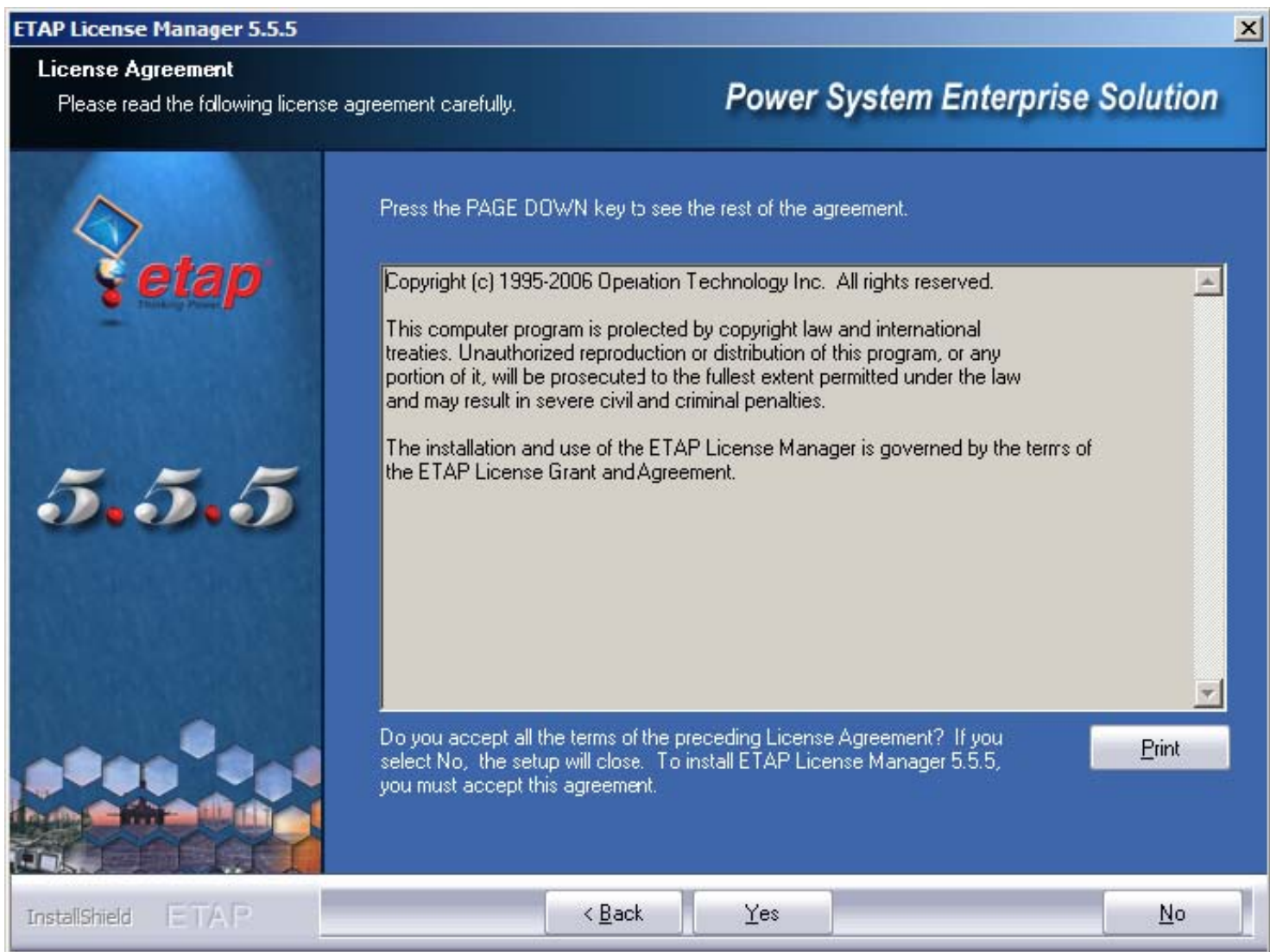
Note: You can also install the ETAP License Manager without the ETAP Installer program by selecting Run from the Start menu, and then selecting SETUP.EXE in the folder LMSETUP on your ETAP CD.

Select ETAP License Manager, and then click the Install button.

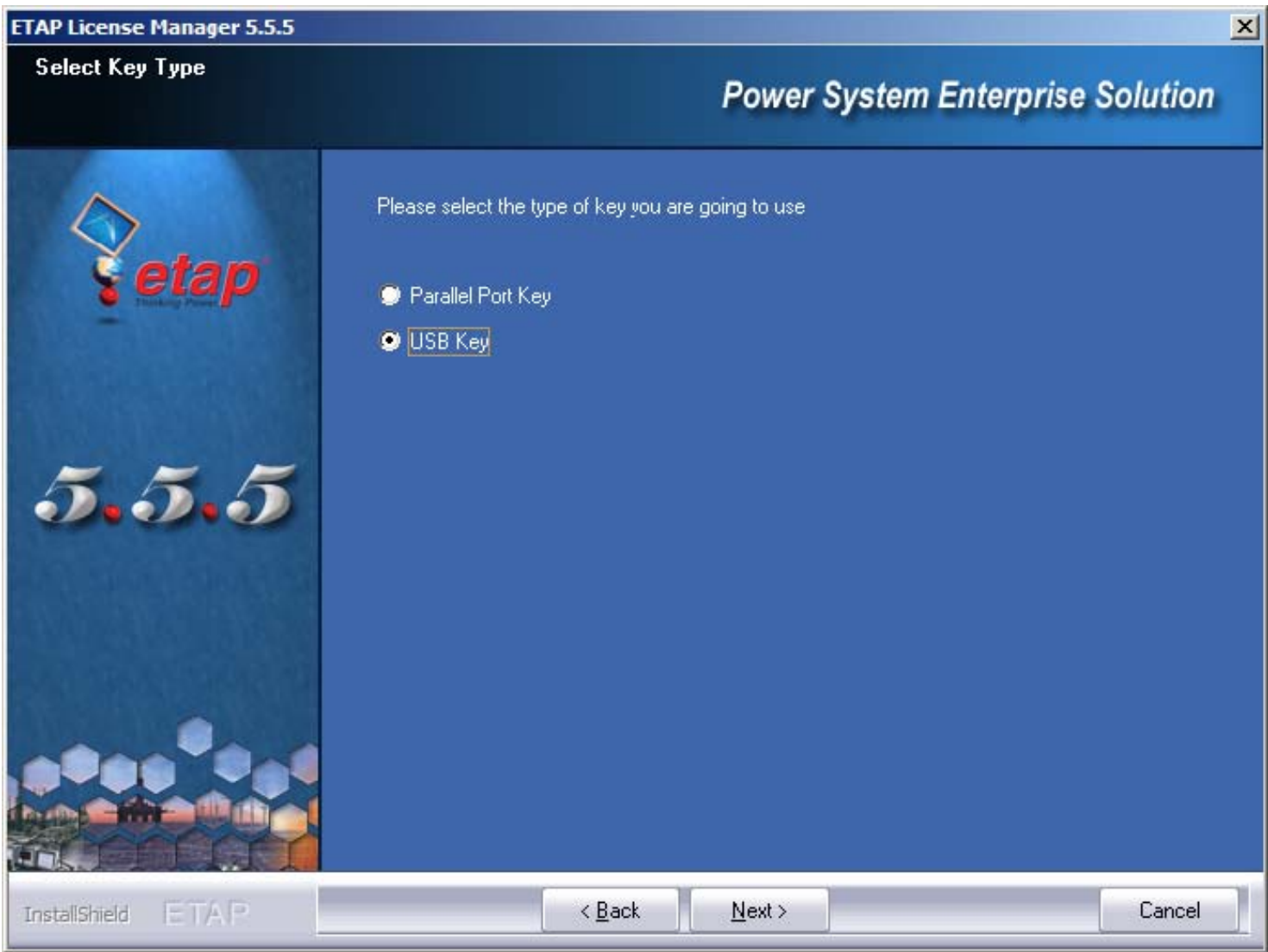
2. ETAP Setup displays the ETAP License Manager Welcome screen for version 5.5.5. Click the Next button.



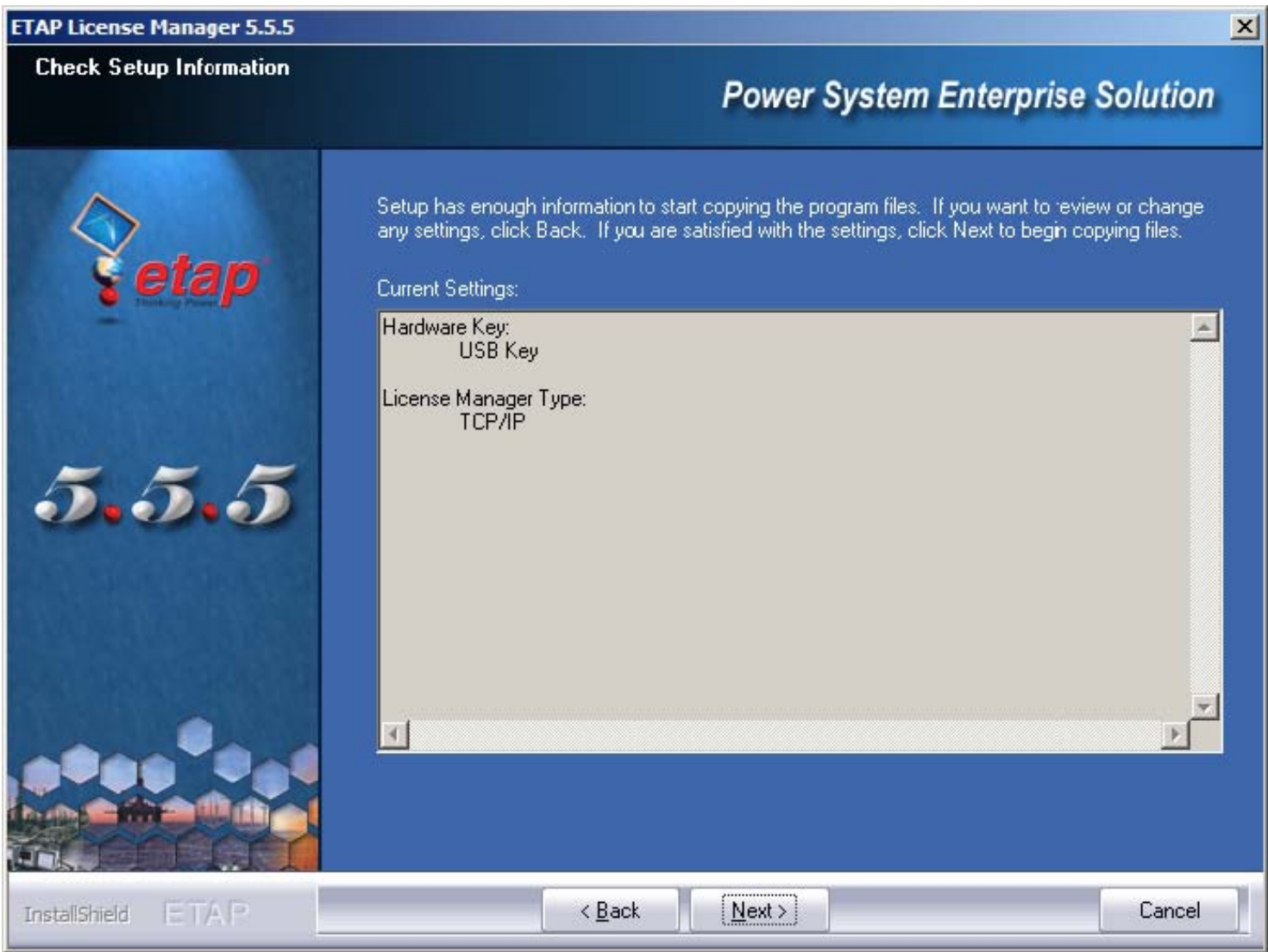
3. The ETAP License Agreement is displayed. By clicking 'Yes' you accept the terms of the agreement.



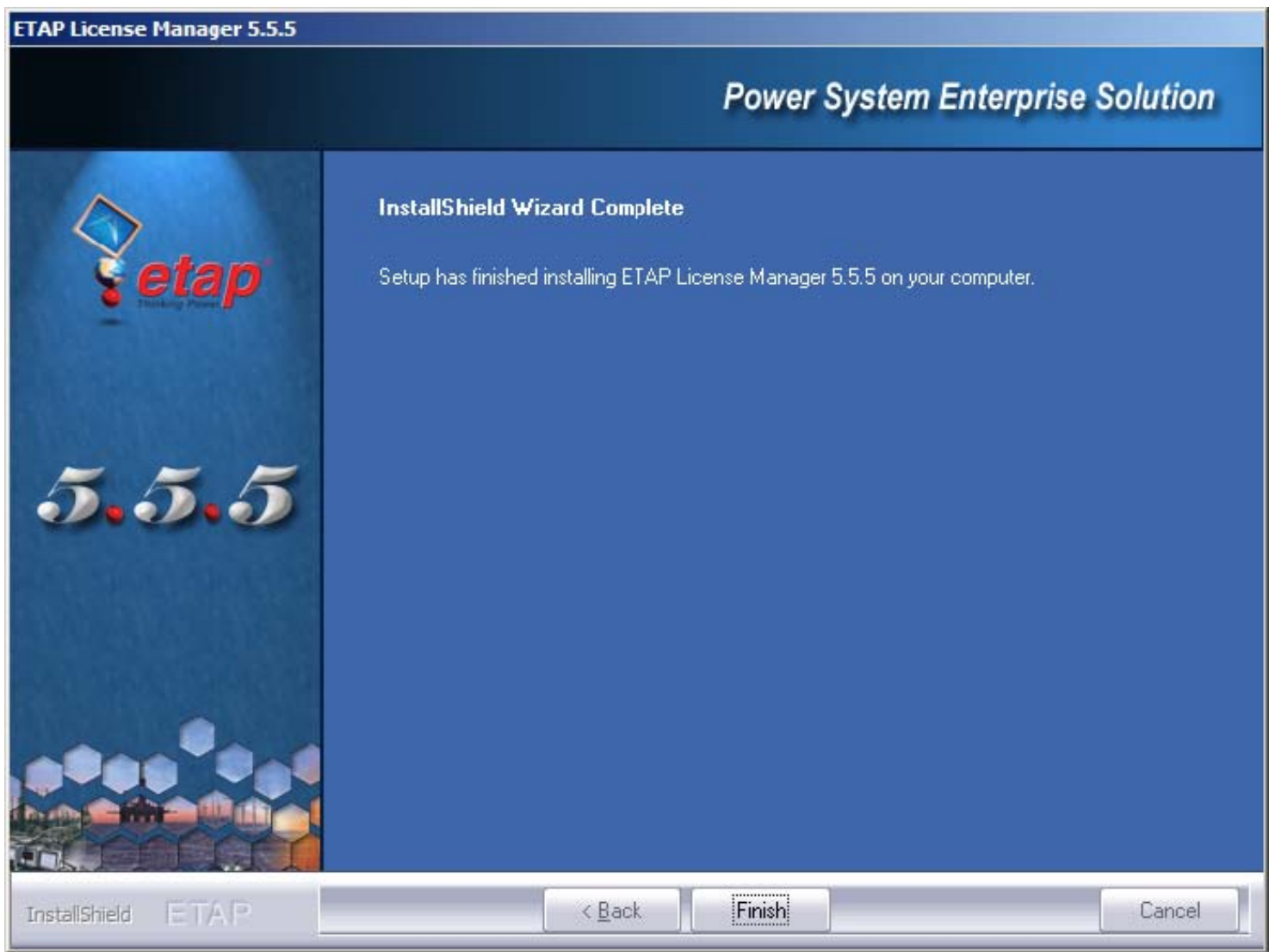
4. ETAP Setup displays the Select Key Type version of the ETAP License Manager dialog box. Select the option for the type of key you are installing (parallel port key or USB key), and then click the Next button.



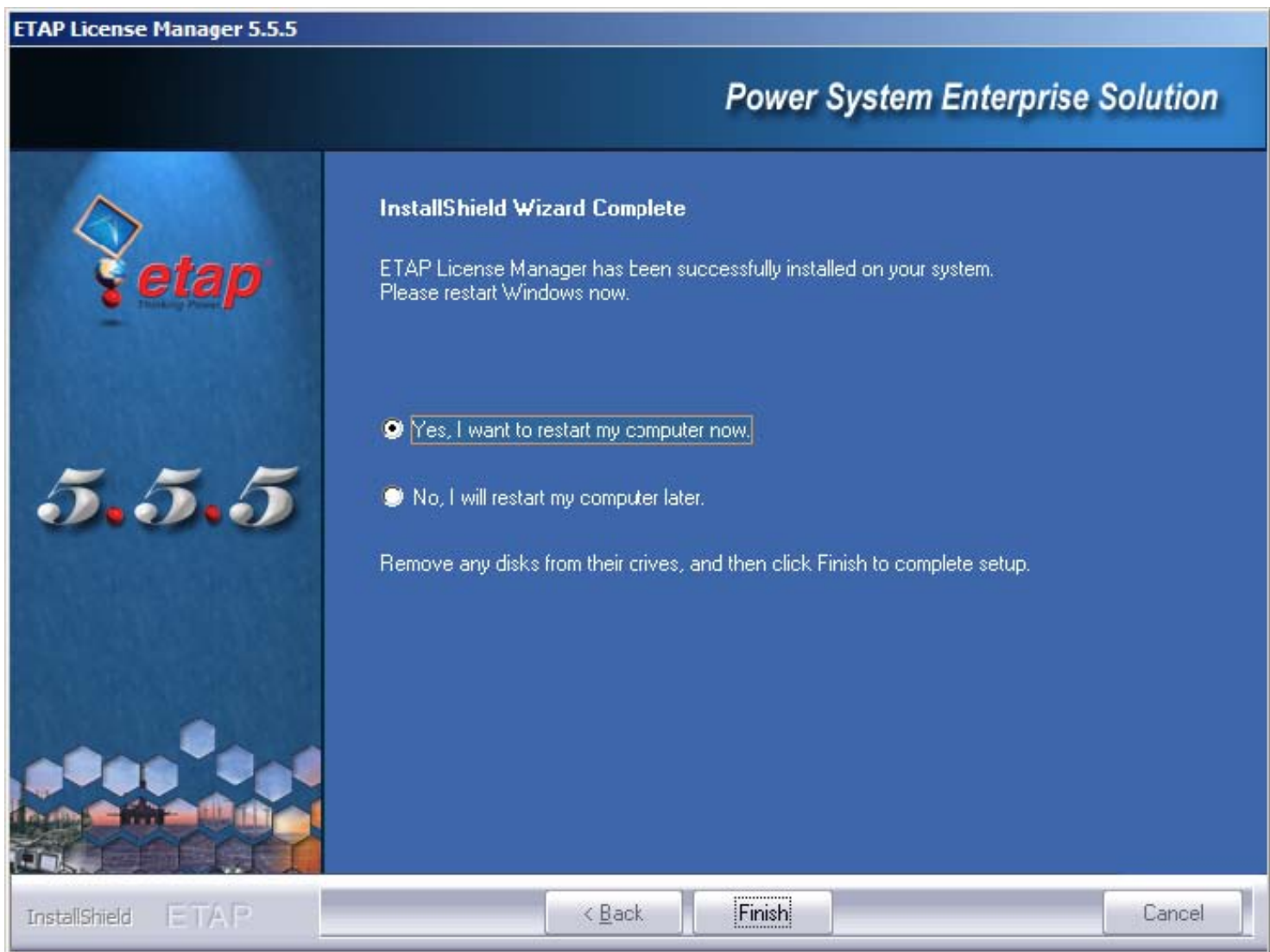
5. ETAP Setup displays the Check Setup Information version of the ETAP License Manager dialog box. Make sure the information is correct, and then click the Next button.



6. Setup installs License Manager. When the installation is complete, ETAP Setup displays the InstallShield Wizard Complete screen. Click the Finish button.



7. ETAP Setup prompts you to restart your computer.



8. For the ETAP License Manager to work properly, setup requires a system restart at the end of the installation procedure. Click the Finish button.

1.1.2 Manual ETAP License Manager Installation

Installation on Windows 2000/XP or Server 2003 must be performed by a user with Windows NT Administrative privileges. Use the manual installation only if the ETAP License Manager Installation program did not successfully install the ETAP License Manager.

Note: Substitute your Windows NT folder name (usually WINNT or Windows) whenever you see WINNT in this document.

1. Logon with administrator privileges to the computer acting as the license manager server.
2. It is necessary to remove an older version of the ETAP License Manager before installing a new one. Remove the old one from the Add/Remove Programs in the Control Panel. It is best to restart the computer after uninstalling the program. Continue with #3 after restarting.
3. From the ETAP CD subfolder LMSETUP\SYSTEM32\DRIVERS, copy the following files into the WINNT\SYSTEM32\DRIVERS subfolder on the hard disk:

DS1410D.SYS
 DS2490.SYS
 ETAPKEY.EXE

KEYREAD.TXT
ETAPSLMT.EXE
OTISVRMSGGS.DLL
MSVCR71.DLL

4. From the WINNT\SYSTEM32\DRIVERS subfolder on the hard disk and run ETAPKEY.EXE.

5. From the ETAP Key menu, select Install ETAP Key and then exit from ETAPKEY.



6. From an MS-DOS prompt, go to the WINNT\SYSTEM32\DRIVERS subfolder.

7. Type: etapslmt -install (for TCP/IP). You should see a message that says: ETAPS Lic Mgr installed.

8. Restart the license manager server.

Operation Technology, Inc.

