

## ETAP FAQ # 8

### What are the Scan Intervals for ETAP Real-Time?

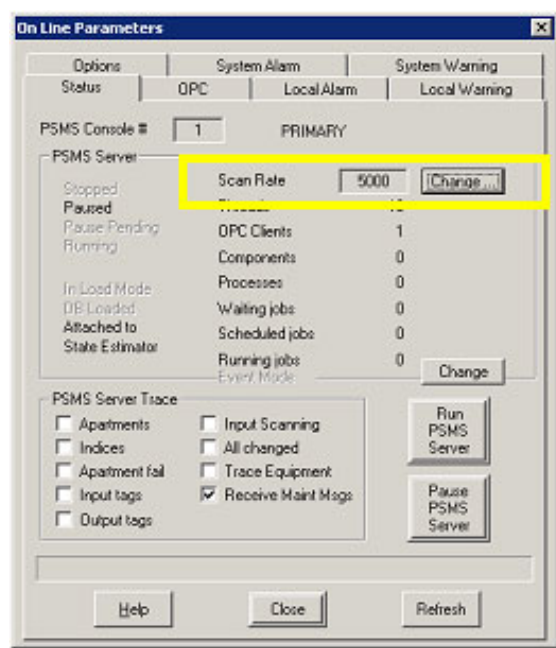
**Description:** The scan intervals of ETAP Real-Time are user-definable. ETAP Real-Time scan time settings depend mainly on the communication network and the type of interface configuration.

**Version:** ETAP Real-Time 4.7

**Published:** July 28, 2002

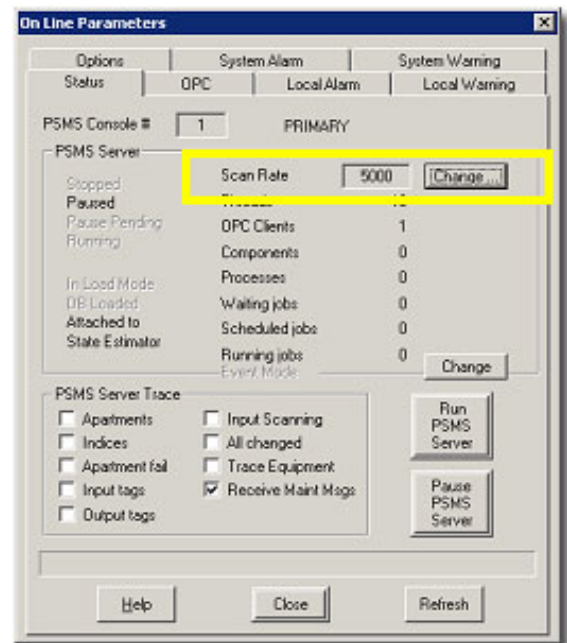
There are three different settings that would determine the speed of data processing:

- Initial Scan Rate
- Client Scan Rate
- Server (Operating) Scan Rate



The Initial Scan Rate determines how fast the data will be fed into the ETAP Real-Time state estimation engine for the first three cycles of calculations.

This scan rate is setup on the On Line Parameters\Status tab.



The Client Scan Rate determines how fast data is fed from the system device (s) to ETAP Real-Time.

The Server (Operating) Scan Rate determines how fast data is passed to the ETAP Real-Time state estimation engine after the third cycle of calculation.

Both the Client Scan Rate and the Server Scan Rate are set in the OPC page of the On Line Parameters editor.

Operation Technology, Inc.

