

ETAP FAQ # 16

Using Hyperlinks in ETAP Projects

Description: ETAP provides the flexibility of linking any document or web page to your ETAP project. Data sheets, tables, pictures, manufacturer web pages, maintenance schedules, and other information can be linked directly to specific devices on the one-line diagram, raceway, system, or different presentations.

Version: ETAP & ETAP Real-Time 4.7.4

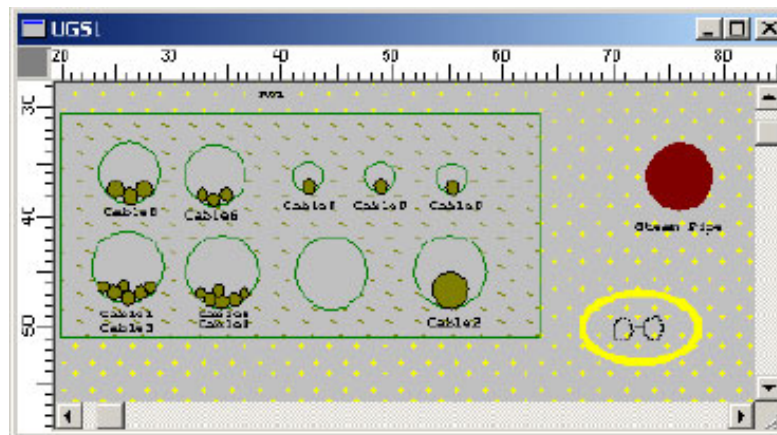
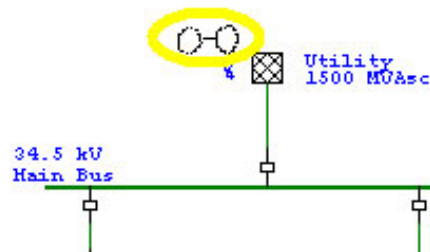
Published: July 23, 2003

Create Hyperlinks

To create a hyperlink, click on the hyperlink button located on the top menu. The cursor changes to “o-o” symbol.



Drag and drop the hyperlink on any device on the one-line diagram, raceway, or presentation including composite motors and networks.



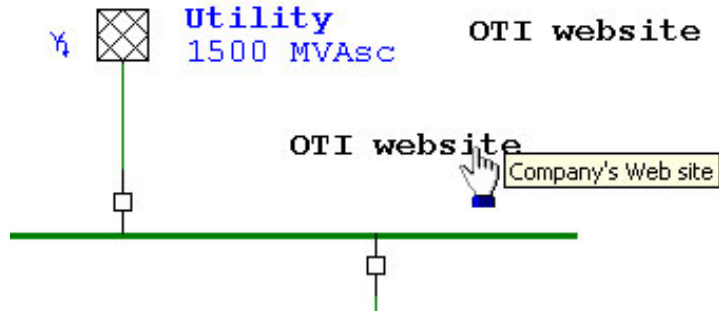
Once you drop the hyperlink, the **Hyperlinks Editor** opens.

Enter the description, address, and tool tip.

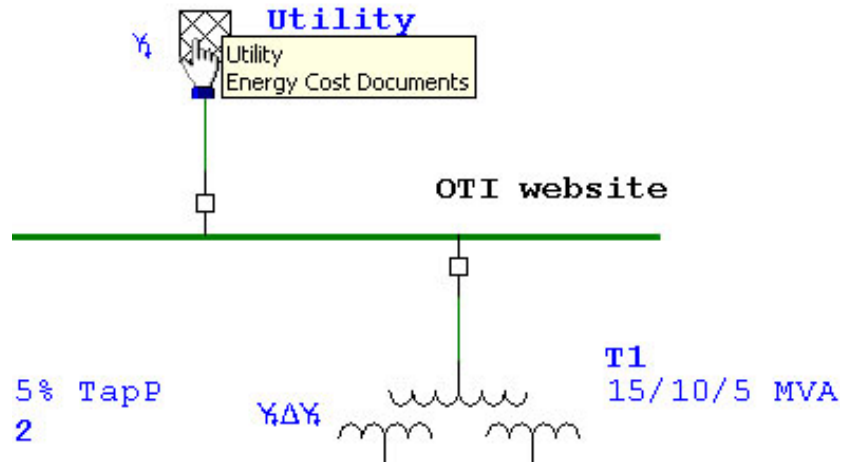
If you want to add more hyperlinks, enter the new information and click on the Add button to add the hyperlink to the list.

When you complete entering the hyperlinks, click on the OK button.

If you placed the hyperlinks on the presentation background, the description text is displayed on the diagram in black and the tool tip is displayed when you place your cursor over the link. Note that your cursor changes to a hand when you are over a hyperlink as shown below.

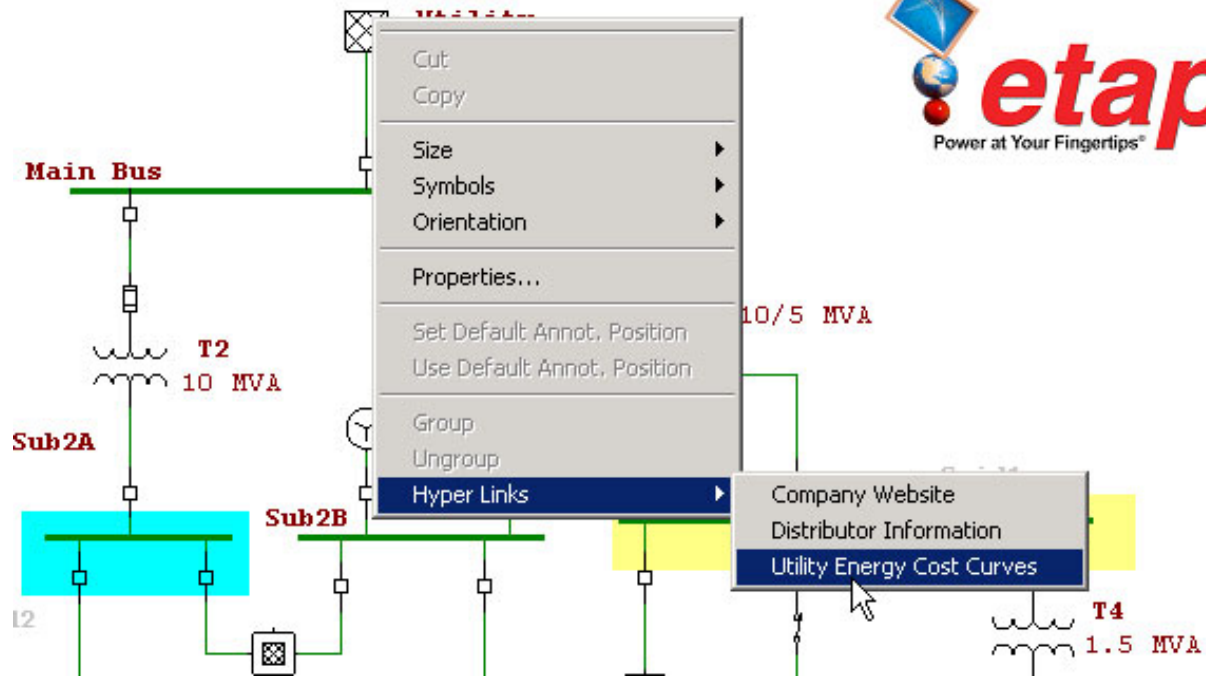


If you placed the hyperlink on a device, the tool tip is added to the device tool tip. In the image below, the tool tip was entered as "Energy Cost Documents." Notice that the cursor changes as you pass it over a device with hyperlinks.



Using Hyperlinks

To activate a hyperlink placed on the presentation background, double-click on the hyperlink. To activate a device hyperlink(s), right-click on the device and select the hyperlink(s). A menu is displayed listing the hyperlinks for the selected device as shown below:



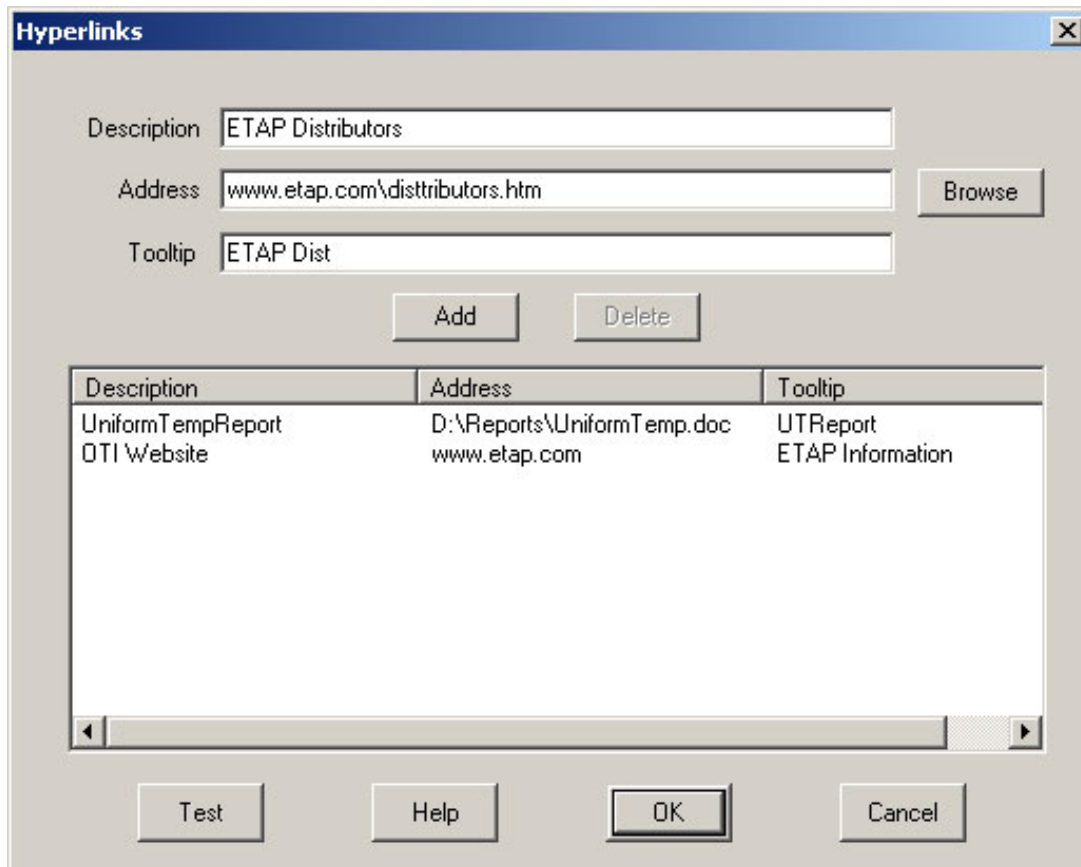
Editing\Removing Hyperlinks

To edit or remove a hyperlink, you need to access the **Hyperlink Editor**. To access the Hyperlink Editor, click on the hyperlink button on the project toolbar and drop it on the device you want the link to be edited/removed from or on the link text on the presentation background.

To edit a hyperlink, click on the hyperlink in the list. The address, description, and tool tip are then appear on the editor. Edit the necessary information and then click on the Add button to save your changes.

To remove a hyperlink, select the hyperlink from the hyperlink list and click on the delete button. The hyperlink is removed.

Hyperlinks Editor



Description

Description of the file or web site. This entry is displayed in the right-click menu or link text on the one-line or raceway diagram.

Address

URL or file path where hyperlink points. Clicking on the browse button and selecting a file will automatically place the path of that file in this field.

Tooltip

For a device hyperlink, the tool tip entry will be added to the device tool tip. For hyperlinks on the presentation background, the tool tip is displayed when you move the mouse cursor over the link.

Browse

Click to open your windows browser to search for a file in your local or network drives.

Add

After you enter the URL or file path, description, and tool tip, click on this button to add or save changes.

Delete

After you select a hyperlink from the list, click on this button to remove the selected hyperlink.

Test

Activates the hyperlink selected. The web site or file will be launched after this button is pressed.