

ETAP TIP – No. 006**Project View (Part 5 - Components): Last Part**

Applicable ETAP Versions: 5.5.0, 5.5.5, 5.5.6

(For lower versions, some of the descriptions and procedures below may differ in some ways)

This is a continuation of ETAP TIP No. 002, 003, 004, & 005.

As usual, you may run Etap program and open the “Example-ANSI.oti” project located at C:\ETAP 55X \Example-ANSI folder (where C: is the drive where you installed Etap program and ETAP 55X is the version of the software) to easily follow the explanations below. In addition, you may refer to “Toolbars’ Map” on page 8 of ETAP TIP No. 003 to map out the toolbars that will be identified in the succeeding procedures.

V. Components

The “Components” folder of the “Project View”, as the name implies, accounts for all the components (i.e. buses, motors, cables, transformer, etc.) you have or may have in your ETAP project. In this folder, you can do the following:

- (a) **Know the statistics of the elements** you have in your project. For example, how many buses or motors you already have in your system (See Fig. 1)

Notes:

- (i) The statistics also includes the counts of those elements which are in the Dumpster. Refer to ETAP TIP No. 002 for information about Dumpster.
- (ii) “Base” Revision should be the active Revision data. See “Changed Elements (Revision Data)” on page 2 for information.

- (b) **Access the element properties** directly for editing without going to the presentations (One Line Diagram, STAR, etc.). See Pop-Up Menu on Page 2.

- (c) **Find an element** in the last active presentation or any desired presentations (One Line Diagrams, STAR, etc.). See Pop-Up Menu on Page 2.

- (d) **Identify or distinguish the elements** which vary in terms of engineering properties between Revision Data and the Base data. See “Changed Elements (Revision Data)” on page 2.

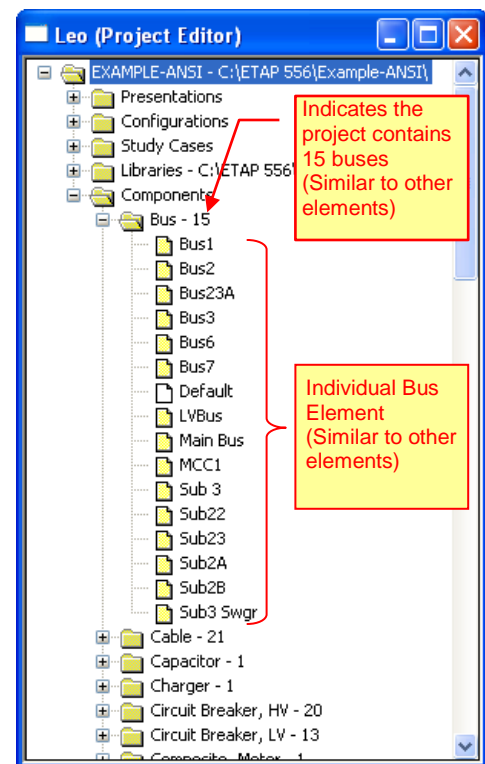


Fig. 1

Note: The “Revision Data” system is another feature of ETAP to handle the “What-If” studies for an electrical system where you vary engineering data of the network components and compare analysis results with the Base Data or other Revision Data. For example, you can change the impedance of a transformer in the Revision Data (leaving the Base Data untouched). You can run two short circuit analyses -- First using the Base Data (of the transformer) and second using the Revision Data (of the same) and compare the impact due to the changes made in the property of the equipment (changing the impedance).

Pop-Up Menu

When you right click an element, a pop-up menu is displayed (See Fig. 2). In general, the menu contains the following commands:

Find in “XXX”

Select this command to locate the element in the last active presentation. “XXX” refers to the name of the last active presentation.

Find in One Line Diagram View...

Select this command to locate the element in other One line diagram presentations (if any)

Find in STAR View...

Select this command to locate the element in any of the STAR (Device coordination TCC plot) presentations (if any)

Properties...

Select this command to access the properties of the element for editing (open the Element Editor Dialog window).

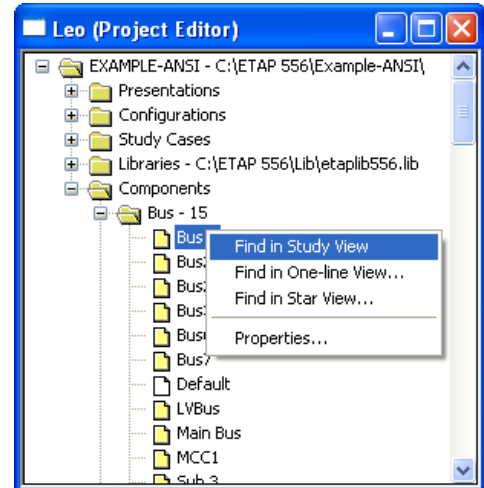


Fig. 2

Changed Elements (Revision Data)

In the “Components” folder, ETAP displays the delta difference between Revision Data and the Base Data. Changed (parameters modified) elements and the folders in which they are stored are colored green.

In the “Example-ANSI.oti” if you select the “2007 Modifications” from the “Revision” toolbar, you will see the “Cable13” cable is flagged as an element that has parameters which differ from the Base Data. Also note that the Bus folder is colored green with the integer “2” appended to it, meaning that there are two buses under this Revision Data ID (2007 Modifications) that are different from the Base Data. See Fig. 3

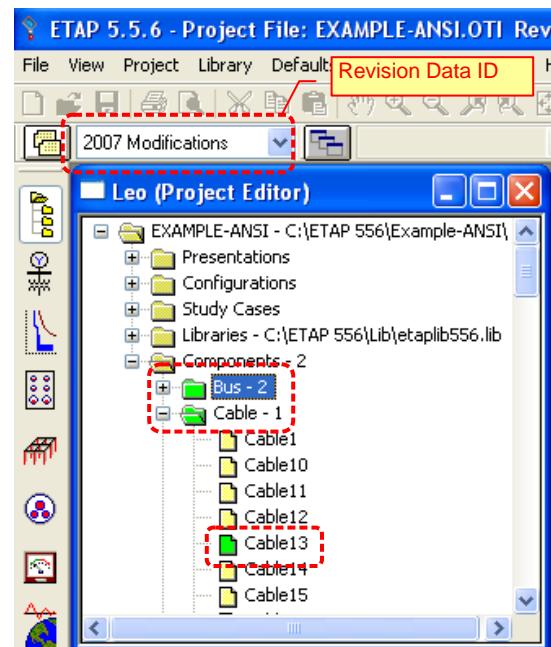


Fig. 3